



Project

Institutional –Mall

MBR Waste Water Treatment

**imemflo**  
Recycling 4 Generations

## Project Details:

Description	Details
Location	Ahmedabad, Gujarat, India
Product	Submerged MBR Membrane
Capacity	40.00 M3/day
Membrane Area	120 M2
Model No.	HMBR 15-8
No Module	1

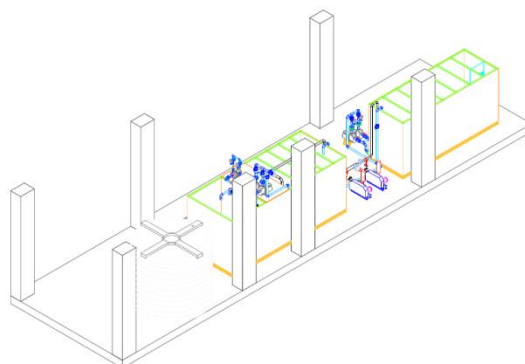
## Plant Details:

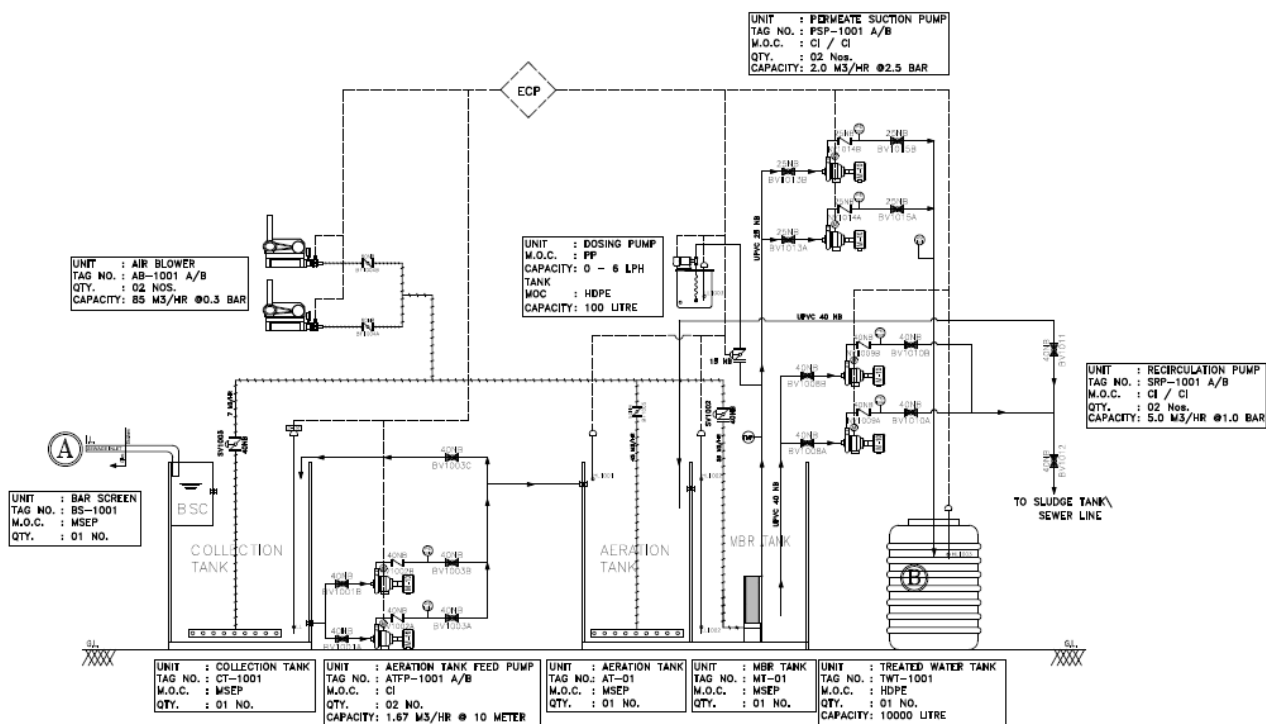
In a Commercial business park the primary utilisation of treated water is in flushing application. The installation capacity of the STP is 40 KLD where 50% water to be recycled in flushing and the rest for floor cleaning or car washing.

## Project Overview:

The project under discussion has been developed keeping the future business growth in mind and it is a new generation business park in the heart of the city.

This Commercial building in one of Ahmedabad's very well-known area, and wanted to install a sewage treatment system in its premises to recycle the building sewage. The treated sewage water was to be recycled for flushing and gardening purposes.





## Imemflo Solution:

As per Discussion with plant manufacturer imemflo suggested them to use imemflo hollow fiber membrane. Imemflo HF-MBR is assembled as a complete filtration module. It consists of a stainless-steel cage or skid made up of several elements including hollow fiber membranes of imemflo series. Imemflo 's HMBR-MA/MB elements have a micro porous structure in the membrane's surface of 0.25µm for optimal microfiltration. PVDF materials delivers greater strength & durability. Imemflo element has a bi-directional suction configuration to enhance filtration performances. H-MBR allows large flux and low investment cost.

## Process Summary:

installed sewage treatment plant with a design capacity of 40 KLD located in Gujarat ,India Samples of raw sewage and treated water from the MBR plant were taken and analysed in laboratory to evaluate the performance of MBR plant. Treated water is being successfully used in Flushing , Floor Washing and Gardening.

## About Imemflo:

Imemflo, a German developed product always focuses on membrane research and development to meet customers strict filtration needs and is available in flat sheet [F- MBR] and hollow fibre module type[ HF- MBR].



→ Scan QR-code  
here and visit our  
Website



Web: [www.imemflo.com](http://www.imemflo.com)  
E mail : [info@imemflo.com](mailto:info@imemflo.com)